



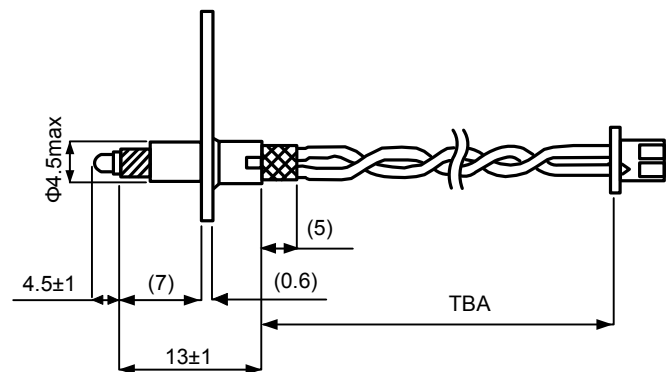
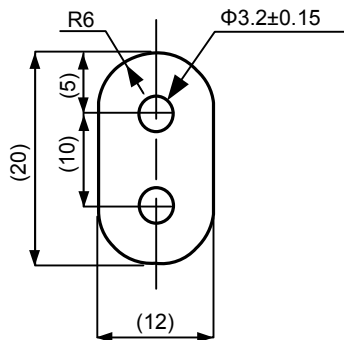
# FRP2 Fast-Response Thermistor Sensors

## Applications

- Tumble-driers
- Heating and air conditioning systems
- Microwave ovens
- Hot air appliances

## Features

- Fast response design ( $T_c \leq 1s$ )
- Accuracy  $\pm 3\%$
- Interchangeability between NTCs
- Excellent long-term stability
- Operating range up to  $+250^\circ C$



NTC Thermistor Series	GT
Temperature Range	$-50^\circ C/+250^\circ C$
Sensor Accuracy	R25 $\pm 3\%$ as standard, $\pm 1\%$ available
Sensor Material	304 stainless steel
Lead Wires	From 24~28 AWG PVC, XLPE, FEP
Connectors	JST XHP-2, Molex Mini-fit Jr., etc.

## Options

Special versions available